

Stormwater Program and Expenses Resolution Worksheet

Date: March 16, 2022

Suggested Motion:

“I move to approve moving forward and delegating to Management the authority to execute the recommended pilot projects and communicate as appropriate those plans and updates to the community as the project progresses.”

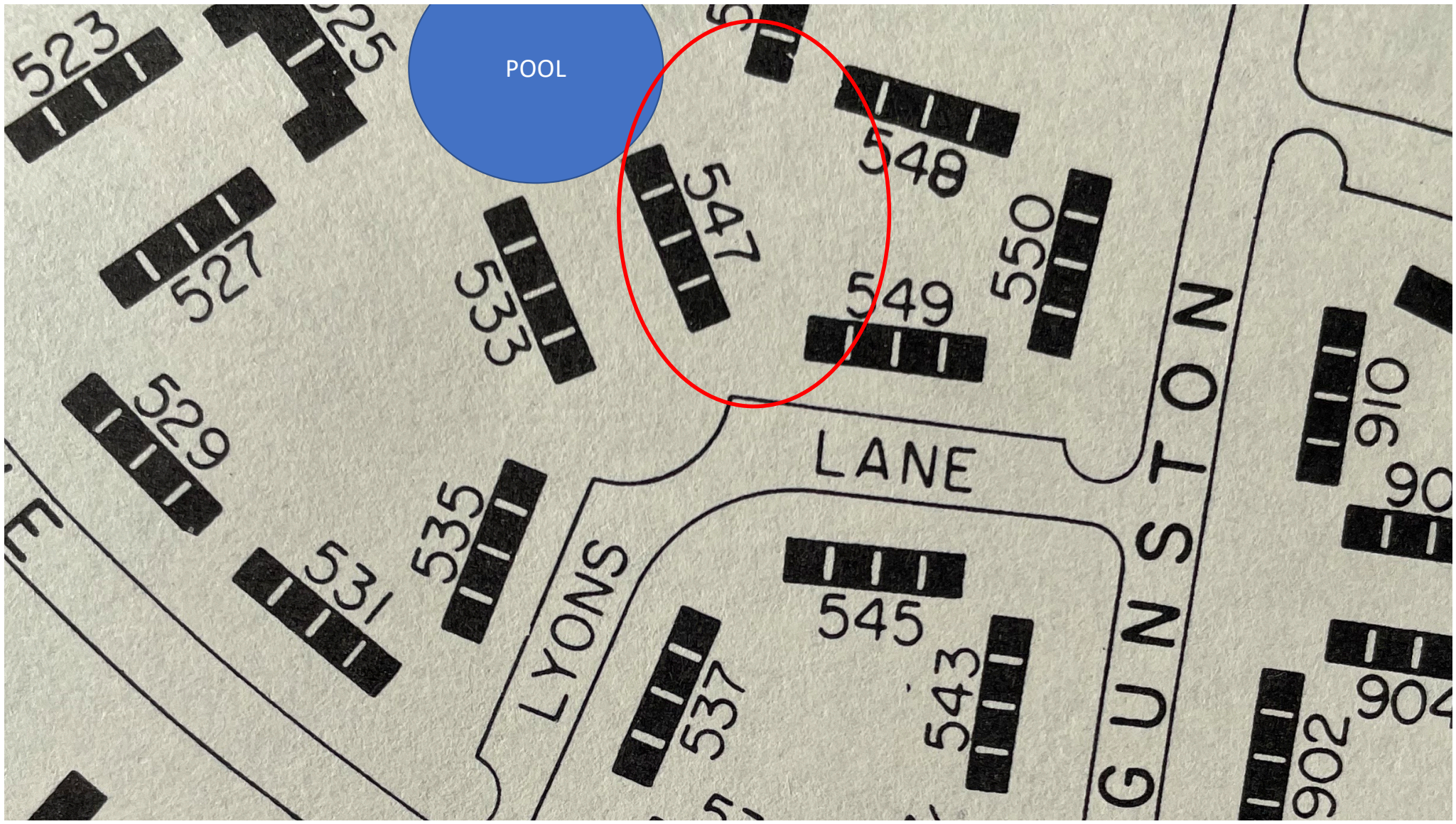
2nd.

Summary:

Landscape Committee Presentation and Drainage Analysis are attached.

Vote:

	In Favor	Opposed	Abstained	Absent
Scott Buchanan				
James Konkel				
Dave Bush				
Jeff Lisanick				
Robin Woods				
Peggy Clancy				
Claire Eberwein				
Peter Ferrell				
Hector Mares				



POOL

LANE

LYONS

GUNSTON

547

548

549

550

910

90

904

902

545

543

537

535

531

529

527

523

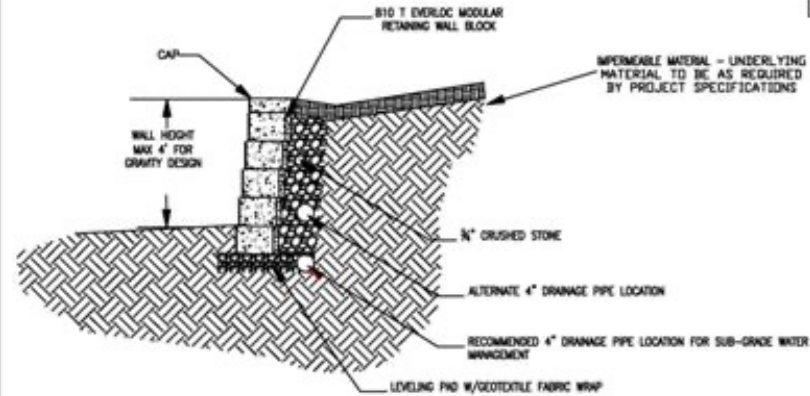
525











NOTES: ALL WALLS OVER 4' IN HEIGHT OR AS REQUIRED BY LOCAL CODE SHOULD BE DESIGNED BY A LICENSED PROFESSIONAL ENGINEER

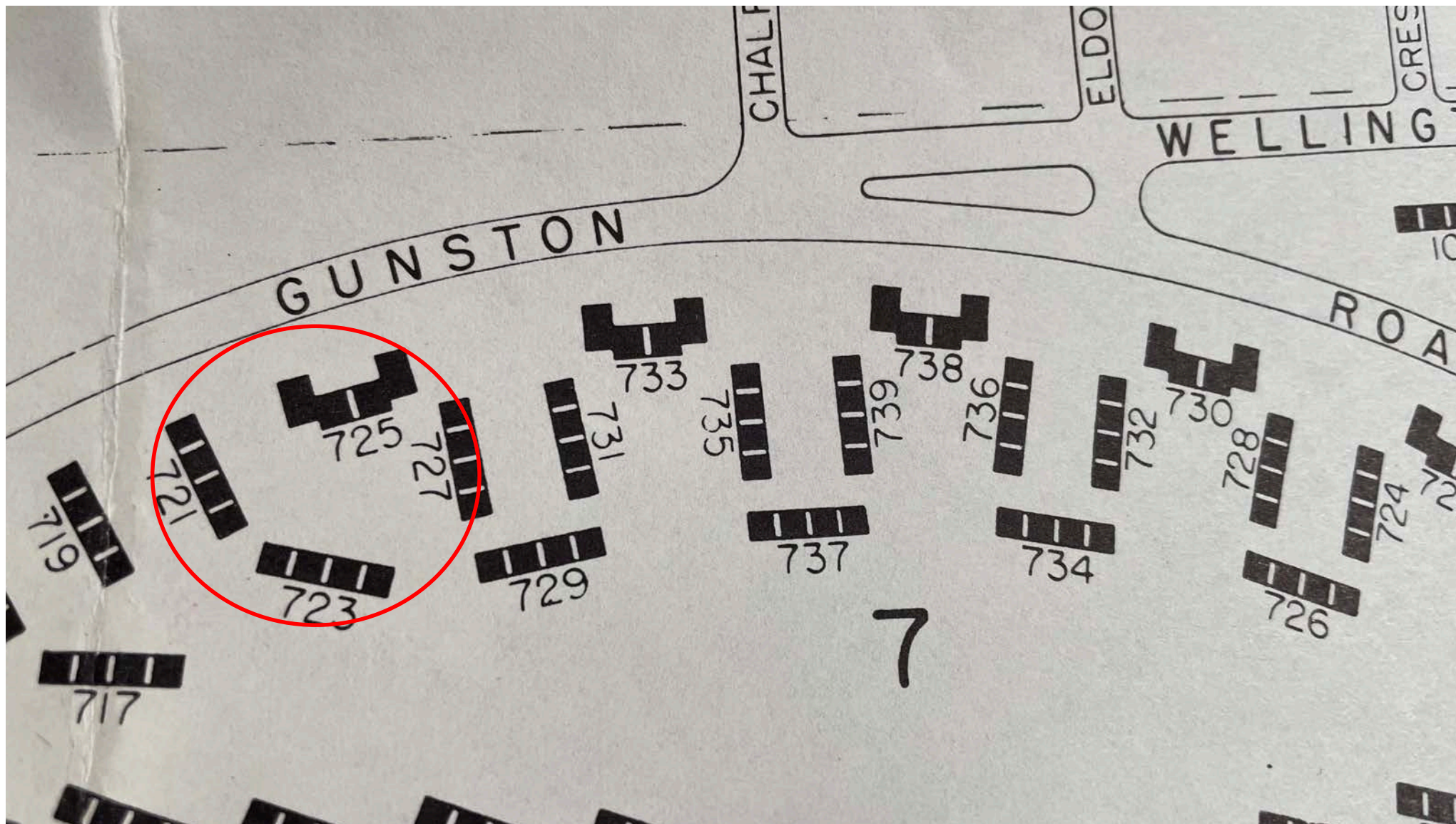
(In areas allowed by Design Engineer)

810 T GRAVITY WALL DETAIL N.T.S.



DISCLAIMER: These typical details are provided for general information purposes only. Anyone making use of these details does so at their own risk and assumes all liability for such use. Site specific design should be performed by a licensed Professional Engineer who is familiar with the actual site conditions, soils, other materials, and local practices.

EverLoc Retaining Wall System	Drawing No.
Gravity Wall Design	101











Parkfairfax 547

Drainage Analysis

Project No. 21261.001.00
September 21, 2021

Prepared for:

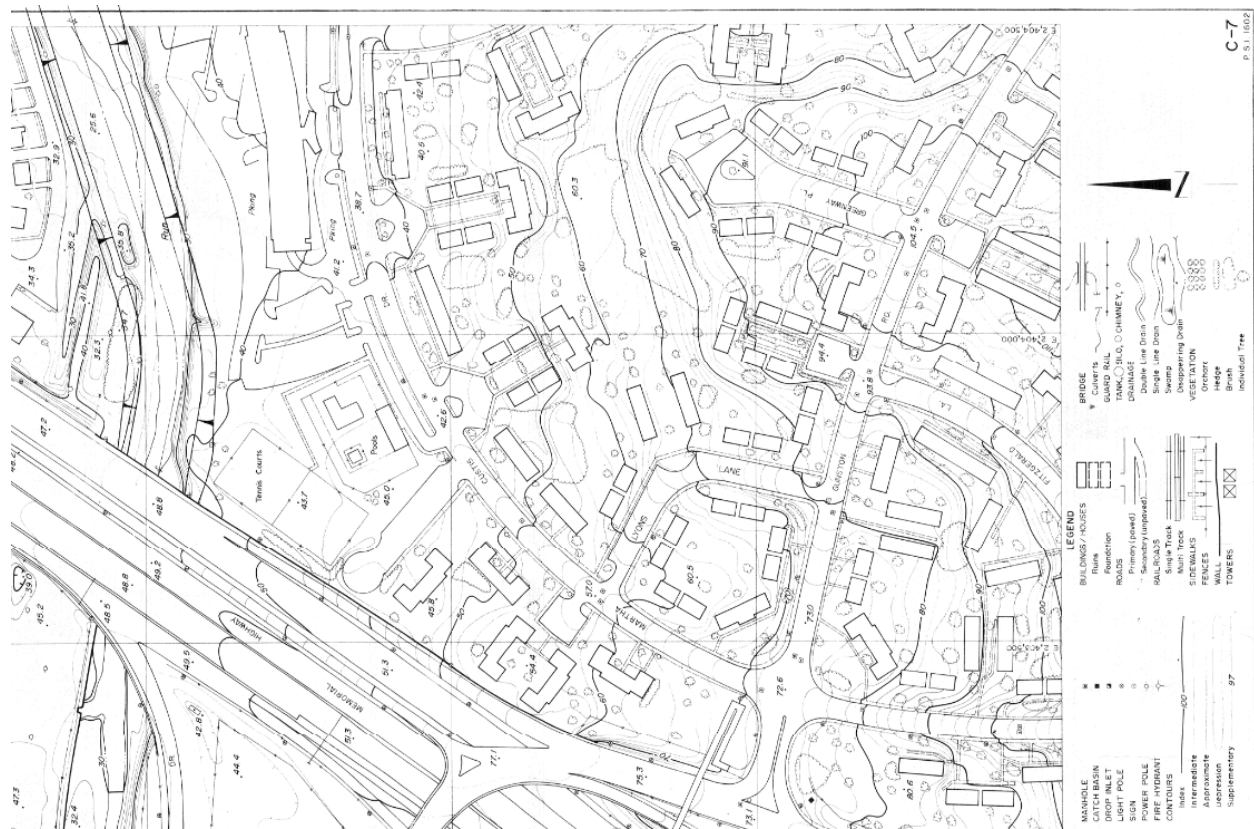
Parkfairfax Condominium
3360 Gunston Road
Alexandria, VA 22302

Scope

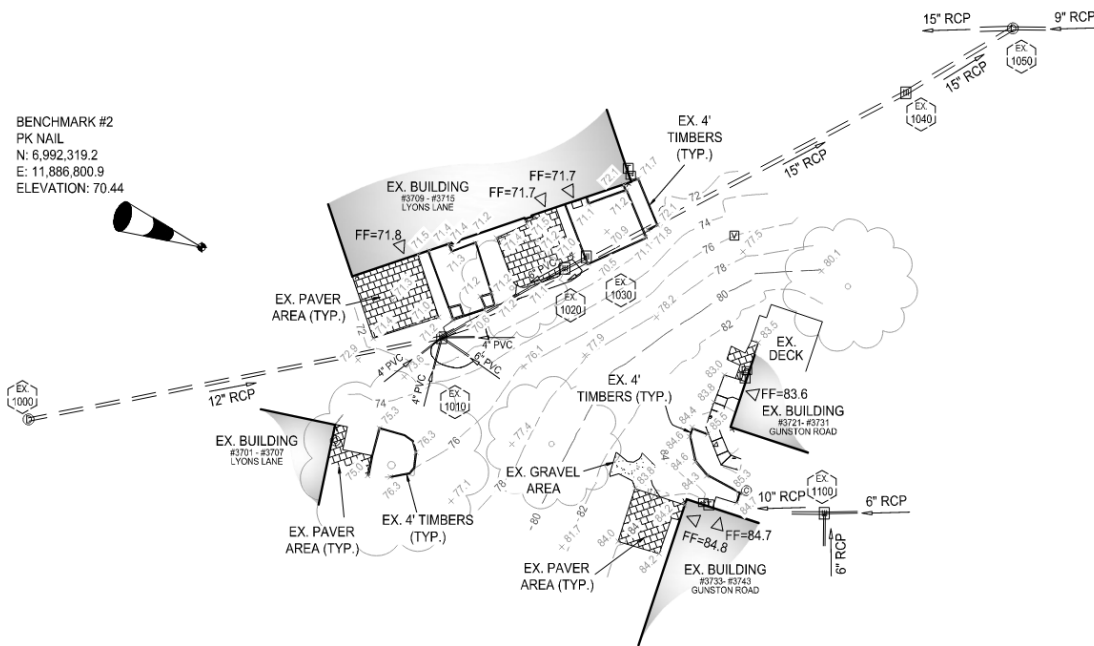
Parkfairfax is a historic community with significant landscape and wooded areas. The buildings were originally built in the early 1940's as rental units to meet wartime civilian housing needs and was converted to condominiums in 1978. The original storm system was built with terracotta using old standards. The scope of this task is to review the drainage area to the existing inlet and storm sewer system using available data. Current standards require storm inlet to be designed to handle the 2-year 24-hour storm events and the storm pipes are designed to handle the 10-year 24 hour storm events. For the purposes of this analysis, we used current City of Alexandria standards.

Existing Topography

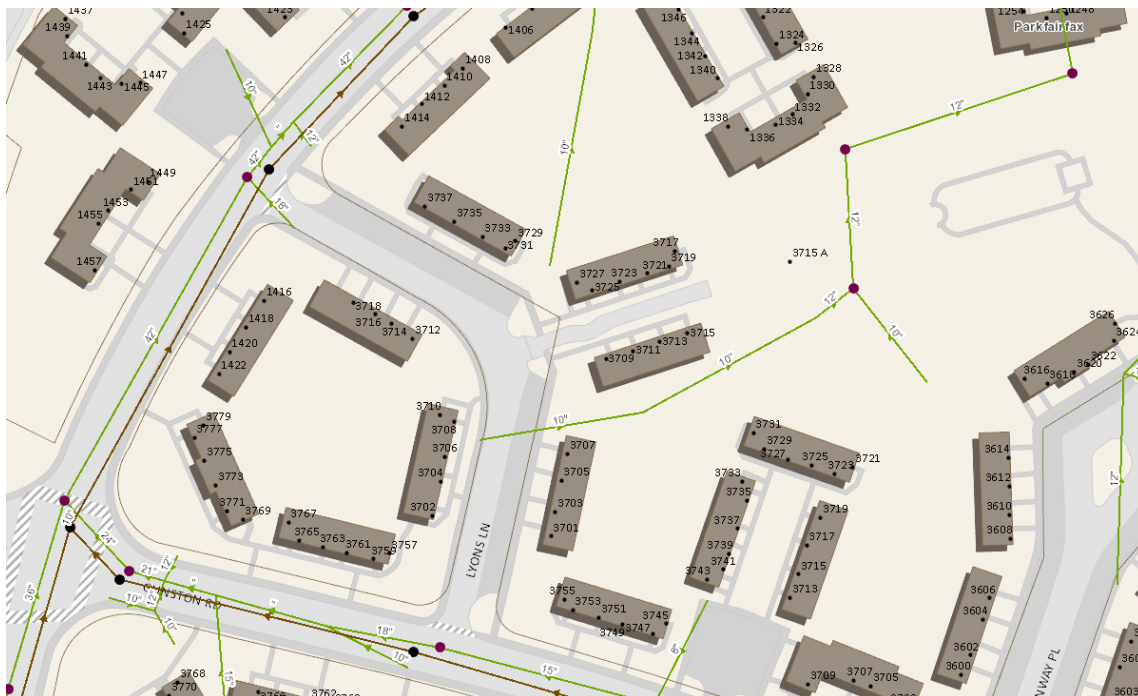
The topography in the 547 area slopes from the Southeast to the Northwest. Below is an overall topography survey used for the drainage divides that was provided by the client. See Exhibit 1.



We also utilized our topographic survey (Exhibit 2) and the City of Alexandria GIS maps to analyze the storm sewer system.



SITE 547

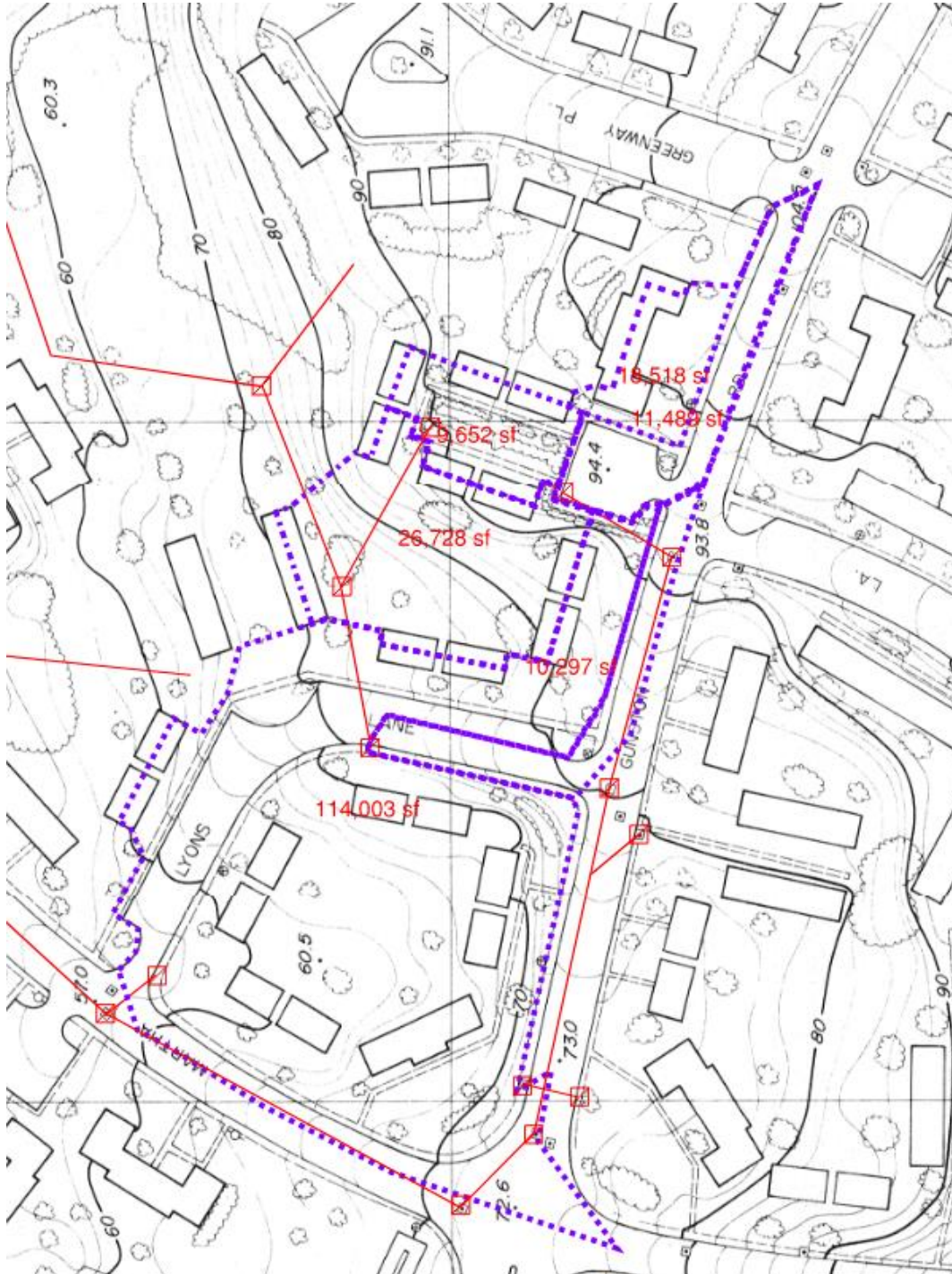


The City of Alexandria GIS maps are located here:

<https://geo.alexandriava.gov/Html5Viewer/Index.html?viewer=sewerviewer>

Drainage Divides

Below are this the drainage divides for the storm sewer system in the area. This information was used to analyze the inlets and storm sewer system in this area.



Analysis

To complete our analysis, we made the following assumptions:

- Storm structure #1100 connects to #1010.
- The roof drains from the building all connect to the storm sewer system but are clogged.
- Every unit has an impervious area of 20' x 20'.
- The owner at Unit number #3711 has a rear amenity area larger than 20' from the building and will be revised to be only 20' from the building to allow for better drainage to storm structure #1010
- Storm structures #1020 and #1030 are clogged.

The drainage area to storm structure #1010 is 0.62 Ac with a weighted c value of 0.61. The drainage area to storm structure #1100 is 0.22 Ac with a weighted c value of 0.62. The drainage area to storm structure #21 is 2.62 Ac with a weighted c value of 0.66. Below are the inlet and storm sewer calculations. The storm sewer and inlet at structure #21 are inadequate.

STORM WATER INLET COMPUTATIONS																				
NUMBER	INLET TYPE	LENGTH ft	DRAINAGE AREA Ac	C	CA	INTENSITY In./Hr.	Q INCR. C.F.S.	Q RRYOV C.F.S.	Qt GUTTERFLOW C.F.S.	S GUTTERSLOPE ft/ft	Sx CROSS SLOPE ft/ft	T SPREAD	d ft	E (Chart 16)	h ft	Q Intercepted C.F.S.	d/h	Qb Carry Over C.F.S.	T Spread @ Sag ft	REMARKS
(left)			1.31	0.66	0.87	6.2	5.37		5.37	0.0200	0.0200	11.61	-	-	-	-	-	-	-	Left
21	SAG	4			1.73	6.2	10.74		10.74				1.26	-	0.46	-	2.75	-	56.63	
(right)			1.31	0.66	0.87	6.2	5.37		5.37	0.0200	0.0200	11.61	-	-	-	-	-	-	-	Right

YARD INLET COMPUTATIONS												
NUMBER	INLET	TYPE	A, Ac	C	CA	I, in	Q, cfs	HW, ft	Top Elev, ft	10 Yr. W.S.E. (ft)	REMARKS	COMMENTS
1010	Grate	12" RD	0.62	0.61	0.38	6.2	2.33	0.63	69.73	70.36	50% clogged*	FIRST FLOOR ELEV=71.7
1100	Grate	12"x12"	0.22	0.62	0.14	6.2	0.85	0.40	86.32	86.72	50% clogged*	

YARD INLET COMPUTATIONS											
NUMBER	INLET	TYPE	A, Ac	C	CA	I, in	Q, cfs	HW, ft	Top Elev, ft	10 Yr. W.S.E. (ft)	REMARKS
1010	Grate	12" RD	0.62	0.61	0.38	6.2	2.33	0.63	69.73	70.36	50% clogged* FIRST FLOOR ELEV=71.7
1100	Grate	12"x12"	0.22	0.62	0.14	6.2	0.85	0.40	86.32	86.72	50% clogged*

STORM SEWER DESIGN COMPUTATIONS														
STRUCTURE		DRAINAGE AREA (ACRES)	RUN-OFF COEF.	RAIN FALL	RUNOFF "Q"	INVERT ELEVATIONS		LENGTH	SLOPE	DIAMETER	CAPACITY	VELOCITY	FLOW TIME	REMARKS
From	To	"A"	"C"	In./Hr.	C.F.S.	Upper End	Lower End	(ft)	(ft/ft)	IN	C.F.S.	F.P.S.	Seconds	
1000	1010	0.24	0.90	9.00	1.92	67.69	64.83	127.70	0.0224	12	5.32	6.11	20.89	
1010	1040	0.62	0.61	9.00	6.54	64.73	61.92	159.10	0.0177	15	8.57	7.65	20.81	
1100	1010	0.22	0.62	9.00	1.24	83.47	unknown	unknown	0.0100	10	2.19	4.07		Assumed Length & Slope
21	20	2.62	0.66	9.00	15.60	unknown	unknown	unknown	0.0100	18	10.50	5.94		Assumed Length & Slope

Summary

The storm sewer structure #1010 by building 547 appears to be inadequate to handle significant storm events. Diverting drainage away from this area would improve this condition. While diverting water from storm structure #1010 improves this area, the drainage area to storm structure #21 is significant and the 10-year storm event generates a ponding depth of approximately 1.3'. The conceptual design diverts additional drainage to this area and christopher recommends meeting with City of Alexandria to discuss prior to moving forward with final design.

GENERAL NOTES

1. THE PROPERTY SHOWN HEREON IS IDENTIFIED ON THE CITY OF ALEXANDRIA, VIRGINIA GEOGRAPHIC INFORMATION SYSTEM AS MAP NUMBER 013.02-0A-00 AND IS ZONED RB.
2. THE PROPERTY SHOWN HEREON IS NOW IN THE NAME OF PARKFAIRFAX CONDOMINIUM, AS SHOWN ON A PLAT ATTACHED TO THE DEED RECORDED IN DEED BOOK 847 AT PAGE 508, AMONG THE LAND RECORDS OF THE CITY OF ALEXANDRIA, VIRGINIA.
3. A.) HORIZONTAL DATUM SHOWN HEREON IS REFERENCED TO THE VIRGINIA COORDINATE SYSTEM (VCS) 1983 - NORTH AS ESTABLISHED FROM A CURRENT GPS SURVEY.
- B.) THE VERTICAL DATUM SHOWN HEREON IS REFERENCED TO THE NORTH AMERICAN VERTICAL DATUM OF 1988 (NAVD 88) GEIOD-12B (GEIOD-18) AS ESTABLISHED FROM A CURRENT GPS SURVEY.
4. NO TITLE REPORT FURNISHED. ALL UNDERLYING TITLE LINES, EASEMENTS, SERVITUDES AND OTHER MATTERS OF TITLE MAY NOT BE SHOWN HEREON. THIS DOCUMENT DOES NOT REPRESENT A CURRENT BOUNDARY SURVEY.
5. THE PHYSICAL IMPROVEMENTS AND TOPOGRAPHY SHOWN HEREON ARE BASED UPON A FIELD SURVEY CONDUCTED BY THIS FIRM ON BETWEEN THE DATES OF AUGUST 2 AND AUGUST 4, 2021.
6. NO GEOTECHNICAL, SUBSURFACE, FIELD REVIEWS, RESEARCH, AGENCY OR GOVERNMENTAL RECORD REVIEWS, OR OTHER INVESTIGATIONS HAVE BEEN MADE FOR THE PURPOSE OF LOCATING, OR DETERMINING THE EXISTENCE OF HAZARDOUS MATERIALS, OR OTHER ENVIRONMENTAL CONCERNS ON SITE IN THE PERFORMANCE OF CHRISTOPHER CONSULTANTS, LTD SERVICES FOR THE PROJECT AS SHOWN HEREON.
7. NO CERTIFICATION HAS BEEN MADE AS TO THE LOCATIONS OF UNDERGROUND UTILITIES SUCH AS, BUT NOT LIMITED TO ELECTRIC, GAS, TELEPHONE, CATV, WATER, SANITARY AND STORM SEWERS.
8. DURING THE PROCESS OF OUR PHYSICAL SURVEY NO INDICATIONS OF A CEMETERY WERE FOUND. NO FURTHER INSPECTION OF THIS PROPERTY HAS BEEN MADE FOR POSSIBLE CEMETERIES.
9. STORM AND SANITARY INVERTS, PIPE SIZES AND MATERIALS HAVE BEEN DETERMINED THROUGH THE USE OF A SEWER VIDEO CAMERA OPERATED BY THIS FIRM ON AUGUST 3, 2021.

FLOOD ZONE NOTE

THE AREA SHOWN HEREON IS LOCATED ON THE FLOOD INSURANCE RATE MAP (FIRM), NO. 5155190029E, WITH AN EFFECTIVE DATE OF JUNE 16, 2011.

BY GRAPHICAL DEPICTION ONLY, THE PROPERTY SHOWN HEREON IS SHOWN IN:

- FLOOD ZONE "X" (OTHER AREAS), AREAS DETERMINED TO BE OUTSIDE THE 0.2% ANNUAL CHANCE FLOODPLAIN.

A FIELD SURVEY WAS NOT PERFORMED TO DETERMINE THE FLOOD ZONES LISTED HEREON. AN ELEVATION CERTIFICATE MAY BE NEEDED TO VERIFY THIS DETERMINATION OR APPLY FOR A VARIANCE FROM THE FEDERAL EMERGENCY MANAGEMENT AGENCY.

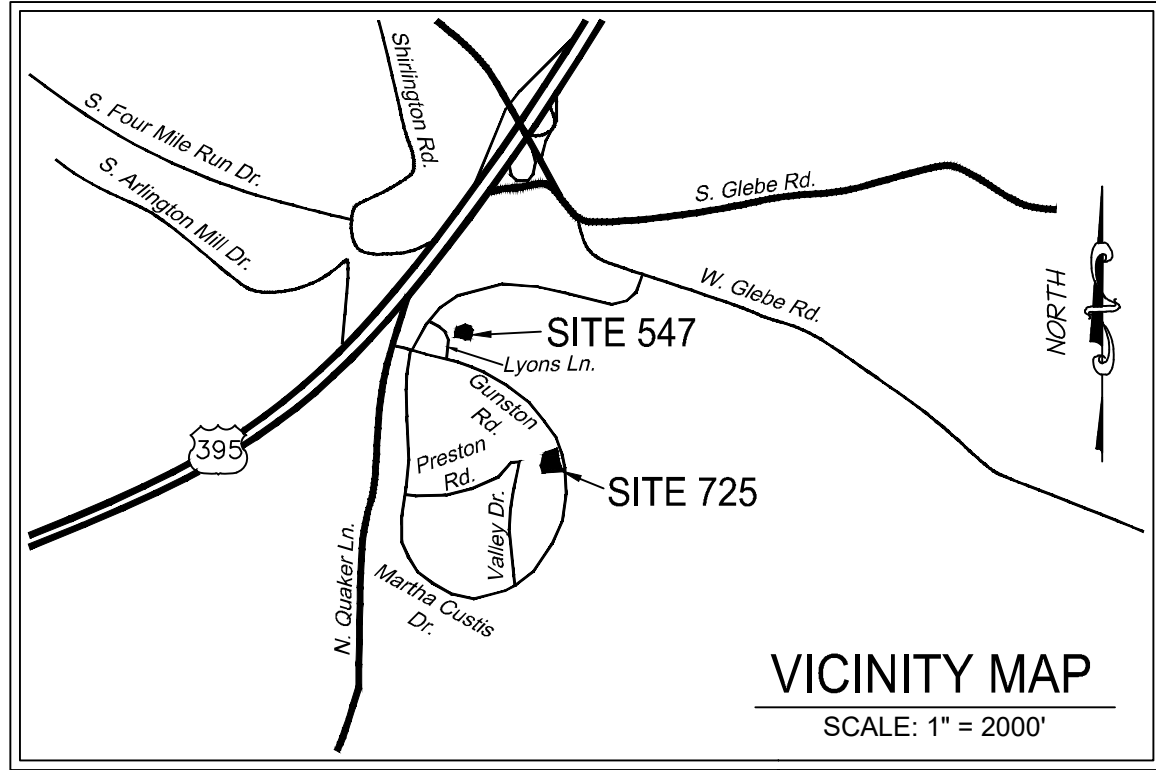
UTILITY MARKING NOTES:

1. THE LOCATION OF UTILITIES SHOWN HEREON ARE FROM OBSERVED EVIDENCE OF ABOVE GROUND APPURTENANCES AND SURFACE GROUND MARKINGS.
2. BEFORE DIGGING IN THIS AREA, CALL "MISS UTILITY" 1-800-552-7001 FOR FIELD LOCATIONS (REQUEST FOR GROUND MARKINGS) OF UNDERGROUND UTILITY LINES.
3. MISS UTILITY WAS NOTIFIED TO MARK FOR UNDERGROUND UTILITIES ON JULY 30, 2021 (TICKET #B121100603-00B AND TICKET #B121100616-00B), NO UNDERGROUND UTILITIES WERE FOUND OR LOCATED BY THIS FIRM.
4. NO PLANS OR MAPS WERE PROVIDED BY THE UTILITY COMPANIES LISTED BELOW TO THE SURVEYOR AT THE TIME OF THE SURVEY.

UTILIZING THE FREE MISS UTILITY SERVICE, AS RENDERED FOR THE PREPARATION OF THIS BASE MAP, IS UNDERSTOOD TO NOT REFLECT IN FULL ALL UNDERGROUND UTILITIES AND THAT THOSE LINES MARKED, SURVEYED AND SHOWN HEREON ARE AN APPROXIMATION OF THE ACTUAL UTILITY LOCATION. UTILITIES SHOWN ON THE SURVEY ARE FOR DOCUMENTING AS MANY UTILITY SERVICES ON THE PROPERTY ONLY. THE UNDERGROUND UTILITIES MAPPED ARE NOT INTENDED TO FACILITATE CIVIL ENGINEERING DESIGN.



UTILITY DESCRIPTION	RESPONSE (MISS UTILITY)	RESPONSE (CHRISTOPHER)
ALEXANDRIA-TRAFFIC	HAS NOT RESPONDED.	UTILITY MARKS WERE NOT FOUND AND ARE NOT SHOWN HEREON.
ALEXANDRIA CITY-SEWER	MARKED UP TO PRIVATELY OWNED UTILITY.	UTILITY MARKS WERE NOT FOUND AND ARE NOT SHOWN HEREON.
COMCAST	NO CONFLICT.	UTILITY MARKS WERE NOT FOUND AND ARE NOT SHOWN HEREON.
DOMINION ENERGY ELEC. DIST.	HAS NOT RESPONDED FOR SITE 547. MARKED FOR SITE 725.	UTILITY MARKS WERE NOT FOUND AND ARE NOT SHOWN HEREON.
PARKFAIRFAX-UTILITIES	MARKED.	UTILITY MARKS WERE NOT FOUND AND ARE NOT SHOWN HEREON.
VIRGINIA AMERICAN WATER	NO CONFLICT.	UTILITY MARKS WERE NOT FOUND AND ARE NOT SHOWN HEREON.
VERIZON	MARKED.	UTILITY MARKS WERE NOT FOUND AND ARE NOT SHOWN HEREON.
WASHINGTON GAS	NO CONFLICT	UTILITY MARKS WERE NOT FOUND AND ARE NOT SHOWN HEREON.



LEGEND

Utilities - Storm	STORM MANHOLE	Misc. Structures	SPOT ELEVATION	Surfaces	CONCRETE AREA
	STORM DRAIN INLET		DECIDUOUS TREE		PAVER AREA
	ROOF DRAIN OUTLET		DOOR LOCATION		GRAVEL AREA
Utilities - Sanitary		Abbreviations		Linetypes	
	SANITARY CLEAN-OUT	EX.	EXISTING		INDEX CONTOUR (10')
Utilities - Water		CONC.	CONCRETE		INT. CONTOUR (2')
	WATER METER	CSW	CONCRETE SIDEWALK		STORM PIPE
	FIRE HYDRANT	TRANS.	TRANSFORMER		
Utilities - Gas		RCP	REINFORCED CONCRETE PIPE		
	GAS VALVE	PVC	POLYVINYL CHLORIDE PIPE		
Utilities - Electric		TYP.	TYPICAL		
	VAULT	FF	FINISHED FLOOR		
	ELECTRIC BOX				
Utilities - Communication					
	COMMUNICATION PEDESTAL				

STORM STRUCTURE DATA

- BENCHMARK #1
PK NAIL
N: 6,992,535.2
E: 11,886,493.1
ELEVATION: 54.54
- BENCHMARK #384
PIPE & CAP
N: 6,991,053.1
E: 11,887,856.1
ELEVATION: 152.12
- BENCHMARK #2
PK NAIL
N: 6,992,319.2
E: 11,886,800.9
ELEVATION: 70.44
- BENCHMARK #339
PIPE & CAP
N: 6,990,935.5
E: 11,887,929.7
ELEVATION: 156.67
- RIM EL. = 72.49
INV OUT (12" RCP TO 1010) = 67.69
- RIM EL. = 70.52
INV OUT (TO 1020) = 69.92
- RIM EL. = 70.34
INV OUT = 68.84
STRUCTURE FILLED WITH MUD AND DEBRIS,
INACCESSIBLE AT TIME OF SURVEY.
- RIM EL. = 69.73
INV IN (12" RCP FROM 1000) = 64.83
INV IN (6" PVC FROM 1020) = 68.18
INV IN (6" PVC FROM SE) = 67.43
INV IN (4" PVC FROM EAST) = 68.33
INV IN (4" PVC FROM SSW) = 68.63
INV IN (4" PVC FROM SW) = 68.90
INV OUT (15" RCP TO 1040) = 64.73
- RIM EL. = 65.72
INV IN (15" RCP FROM 1010) = 61.92
INV OUT (15" RCP TO 1050) = 61.82
- RIM EL. = 67.74
INV IN (15" RCP FROM 1040) = 61.24
INV IN (9" RCP FROM EAST) = 61.34
INV OUT (15" RCP TO WEST) = 61.14
- RIM EL. = 86.32
INV IN (6" RCP FROM EAST) = 83.52
INV IN (6" RCP FROM SOUTH) = 83.52
INV OUT (10" RCP TO WEST) = 83.47
- RIM EL. = 139.93
INV IN (9" RCP FROM NW) = 133.43
INV OUT (9" RCP TO EAST) = 132.63
- RIM EL. = 150.92
INV OUT (12" RCP FROM EAST) = 146.32
STRUCTURE FILLED WITH MUD AND DEBRIS
AT TIME OF SURVEY.

SURVEYOR'S CERTIFICATION

THIS TOPOGRAPHIC SURVEY ON A PORTION OF THE LAND OF PARKFAIRFAX CONDOMINIUM WAS COMPLETED UNDER THE DIRECT AND RESPONSIBLE CHARGE OF WILLIAM E. BRADFORD II, L.S. FROM AN ACTUAL GROUND SURVEY MADE UNDER MY SUPERVISION BETWEEN THE DATES OF AUGUST 2 AND AUGUST 4, 2021 AND THAT THIS PLAT MEETS MINIMUM ACCURACY STANDARDS OF THE COMMONWEALTH OF VIRGINIA UNLESS OTHERWISE NOTED.

GIVEN UNDER THIS 4th DAY OF AUGUST, 2021.



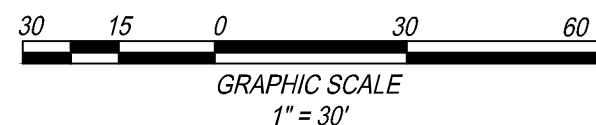
WILLIAM E. BRADFORD II
COMMONWEALTH OF VIRGINIA
LICENSED LAND SURVEYOR NO.: 003514

SITE 725

PARKFAIRFAX CONDOMINIUM

AS SHOWN ON A PLAT ATTACHED TO THE DEED
RECORDED IN DEED BOOK 847 AT PAGE 508
ZONED: RB

SITE 547



REV#	DATE	REVISION

TOPOGRAPHIC SURVEY ON A PORTION OF THE LAND OF

PARK FAIRFAX CONDOMINIUM

AS SHOWN ON A PLAT RECORDED WITH AND ATTACHED TO THE DEED
RECORDED IN DEED BOOK 847 AT PAGE 508

CITY OF ALEXANDRIA, VIRGINIA

PROJECT: 21261.001.00
DRAWING NO.: 110999
SCALE: 1" = 30'
DATE: 8/18/21
DRAWN: ERR / RTC CHECKED: CGH
SHEET No.

STORM WATER INLET COMPUTATIONS

NUMBER	INLET TYPE	LENGTH ft.	DRAINAGE AREA, Ac	C	CA	INTENSITY In./Hr.	Q INCRE. C.F.S.	Q RRYOV C.F.S.	Qt GUTTERFLOW C.F.S.	S GUTTERSLOPE ft./ft	Sx CROSS SLOPE ft./ft	T SPREAD	W ft.	W/T	Sw ft./ft	Sw/Sx	Eo (Chart 10)	a	Sw' a/(12W)	Se (Sx+SwEo) ft./ft	Lt Length ft.	P Effec. Lt. ft.	L/Lt	d ft.	E (Chart 16)	h ft.	Q Intercepted C.F.S.	d/h	Qb Carry Over C.F.S.	T Spread @ Sag ft.	REMARKS
(left)			1.31	0.66	0.87	6.2	5.37		5.37	0.0200	0.0200	11.61	2	0.17	0.0833	4.17		3.52	0.1466	0.0200	-	-	-	-	-	-	-	-	-	-	Left
21	SAG	4			1.73	6.2	10.74		10.74				2								-	14.4	-	1.26	-	0.46	-	2.75	-	56.63	
(right)			1.31	0.66	0.87	6.2	5.37		5.37	0.0200	0.0200	11.61	2	0.17	0.0833	4.17		3.52	0.1466	0.0200	-	-	-	-	-	-	-	-	-	-	Right

YARD INLET COMPUTATIONS

NUMBER	INLET	TYPE	A, Ac	C	CA	I, in	Q, cfs	HW, ft	Top Elev, ft	10 Yr. W.S.E. (ft)	REMARKS	COMMENTS
1010	Grate	12" RD	0.62	0.61	0.38	6.2	2.33	0.63	69.73	70.36	50% clogged*	FIRST FLOOR ELEV=71.7
1100	Grate	12"x12"	0.22	0.62	0.14	6.2	0.85	0.40	86.32	86.72	50% clogged*	

STORM SEWER DESIGN COMPUTATIONS																		
STRUCTURE From To		DRAINAGE AREA (ACRES) "A"	RUN-OFF COEF. "C"	"CA" Increment	"CA" Accumulated	INLET TIME Min.	RAIN FALL In./Hr.	RUNOFF	INVERT ELEVATIONS		LENGTH (ft)	SLOPE (ft/ft)	MANNING'S "n" VALUE	DIAMETER IN	CAPACITY	VELOCITY F.P.S.	FLOW TIME Seconds	REMARKS
								"Q"										
								C.F.S.							C.F.S.			
1000	1010	0.24	0.90	0.213	0.213	5	9.00	1.92	67.69	64.83	127.70	0.0224	0.013	12	5.32	6.11	20.89	
1010	1040	0.62	0.61	0.376	0.727	5	9.00	6.54	64.73	61.92	159.10	0.0177	0.013	15	8.57	7.65	20.81	
1100	1010	0.22	0.62	0.138	0.138	5	9.00	1.24	83.47	unknown	unknown	0.0100	0.013	10	2.19	4.07		Assumed Length &Slope
21	20	2.62	0.66	1.733	1.733	5	9.00	15.60	unknown	unknown	unknown	0.0100	0.013	18	10.50	5.94		Assumed Length &Slope

Example of grate inlet to install in
between structures 1000 and 1010



MARK #2

19.2

300.9

N: 70.44

Dry swale at 3%

Owner's Association to
provide notice to property
owner

Owner's Association to
TV storm lines

GRADE TO PROVIDE
POSITIVE DRAINAGE
AWAY FROM UNITS
AND TO LYONS LANE

EX.
1000

12" RCP

Potential location for doghouse
grate inlet to collect stormwater
from above the retaining wall

EX. BUILDING
#3701 - #3707
LYONS LANE

EX. PAVER
AREA (TYP.)

EX. 4' TIMBERS
(TYP.)

2' MAX HGT, ~120' LONG RET WALL
(LIVING WALL)
-BOTTOM GRADE TO MATCH EXISTING
-TOP GRADE 2' MAX HIGHER TO
ALLOW FOR DRAINAGE SWALE TO
DIVERT WATER TO LYONS LANE

EX. 4'
TIMBERS
(TYP.)

FF=71.7

FF=71.7

FF=71.8

EX. BUILDING
#3709 - #3715
LYONS LANE

72.1

71.2

71.1

71.0

70.9

70.8

70.7

70.6

70.5

70.4

70.3

70.2

70.1

70.0

69.9

69.8

69.7

69.6

69.5

69.4

69.3

69.2

69.1

69.0

68.9

68.8

68.7

68.6

68.5

68.4

68.3

68.2

68.1

68.0

67.9

67.8

67.7

67.6

67.5

67.4

67.3

67.2

67.1

67.0

66.9

66.8

66.7

66.6

66.5

66.4

66.3

66.2

66.1

66.0

65.9

65.8

65.7

65.6

65.5

65.4

65.3

65.2

65.1

65.0

64.9

64.8

64.7

64.6

64.5

64.4

64.3

64.2

64.1

64.0

63.9

63.8

63.7

63.6

63.5

63.4

63.3

63.2

63.1

63.0

62.9

62.8

62.7

62.6

62.5

62.4

62.3

62.2

62.1

62.0

61.9

61.8

61.7

61.6

61.5

61.4

61.3

61.2

61.1

61.0

60.9

60.8

60.7

60.6

60.5

60.4

60.3

60.2

60.1

60.0

59.9

59.8

59.7

59.6

59.5

59.4

59.3

59.2

59.1

59.0

58.9

58.8

58.7

58.6

58.5

58.4

58.3

58.2

58.1

58.0

57.9

57.8

57.7

57.6

57.5

57.4

57.3

57.2

57.1

57.0

56.9

56.8

56.7

56.6

56.5

56.4

56.3

56.2

56.1

56.0

55.9

55.8

55.7

55.6

55.5

55.4

55.3

55.2

55.1

55.0

54.9

54.8

54.7

54.6

54.5

54.4

54.3

54.2

54.1

54.0

53.9

53.8

53.7

53.6

53.5

53.4

53.3

53.2

53.1

53.0

52.9

52.8

52.7

52.6

52.5

52.4

52.3

52.2

52.1

52.0

51.9

51.8

51.7

51.6

51.5

51.4

51.3

51.2

51.1

51.0

50.9

50.8

50.7

50.6

50.5

50.4

50.3

50.2

50.1

50.0

49.9

49.8

49.7

49.6

49.5

49.4

49.3

49.2

49.1

49.0

48.9

48.8

48.7

48.6

48.5

48.4

48.3

48.2

48.1

48.0

47.9

47.8

47.7

47.6

47.5

47.4

47.3

47.2

47.1

47.0

46.9

46.8

46.7

46.6

46.5

46.4

46.3

46.2

46.1

46.0

45.9

45.8

45.7

45.6

45.5

45.4

45.3

45.2

45.1

45.0

44.9

44.8

44.7

44.6

44.5

44.4

44.3

44.2

44.1

44.0

43.9

43.8

43.7

43.6

43.5

43.4

43.3

43.2

43.1

43.0

42.9

42.8

42.7

42.6

42.5

42.4

42.3

42.2

<



9900 MAIN ST STE 400, FAIRFAX, VA 22031
(703)-273-6820

1/14/2022

PARKFAIRFAX 547 SITE PRELIMINARY BUDGET
(FIGURES BASED ON CONCEPTUAL GRADING EXHIBIT SENT TO H.O.A. AROUND 12/13/21)

SITE									
DOGHOUSE GRATE INLET									
	1 EA	@	\$	1400	-	\$	2500 /SF	=	\$1,400.00 - \$2,500.00
RETAINING WALL (LIVING WALL)									
	240 SF	@	\$	40	-	\$	50 /SF	=	\$9,600.00 - \$12,000.00
SOD									
	2,500 SF	@	\$	1.5	-	\$	2.5 /SF	=	\$3,750.00 - \$6,250.00
EARTHWORK/GRADING									
	1 EA	@	\$	8,000	-	\$	10,000 /EA	=	\$8,000.00 - \$10,000.00
TOTAL COST = \$									\$22,750.00 - \$30,750.00
TOTAL COST WITH 5% CONTINGENCY = \$									\$23,887.50 - \$32,287.50

THIS ESTIMATE IS PROVIDED FOR INFORMATIONAL PURPOSES ONLY; IT IS NOT BASED ON ACTUAL PRICES OF MATERIAL OR LABOR COSTS AT TIME OF INSTALLATION, WHICH CAN FLUCTUATE. THIS ESTIMATE DOES NOT INCLUDE COSTS OF REMOVALS, RELOCATIONS, OR CRANE FEES, THAT MAY BE REQUIRED.

NOTES:

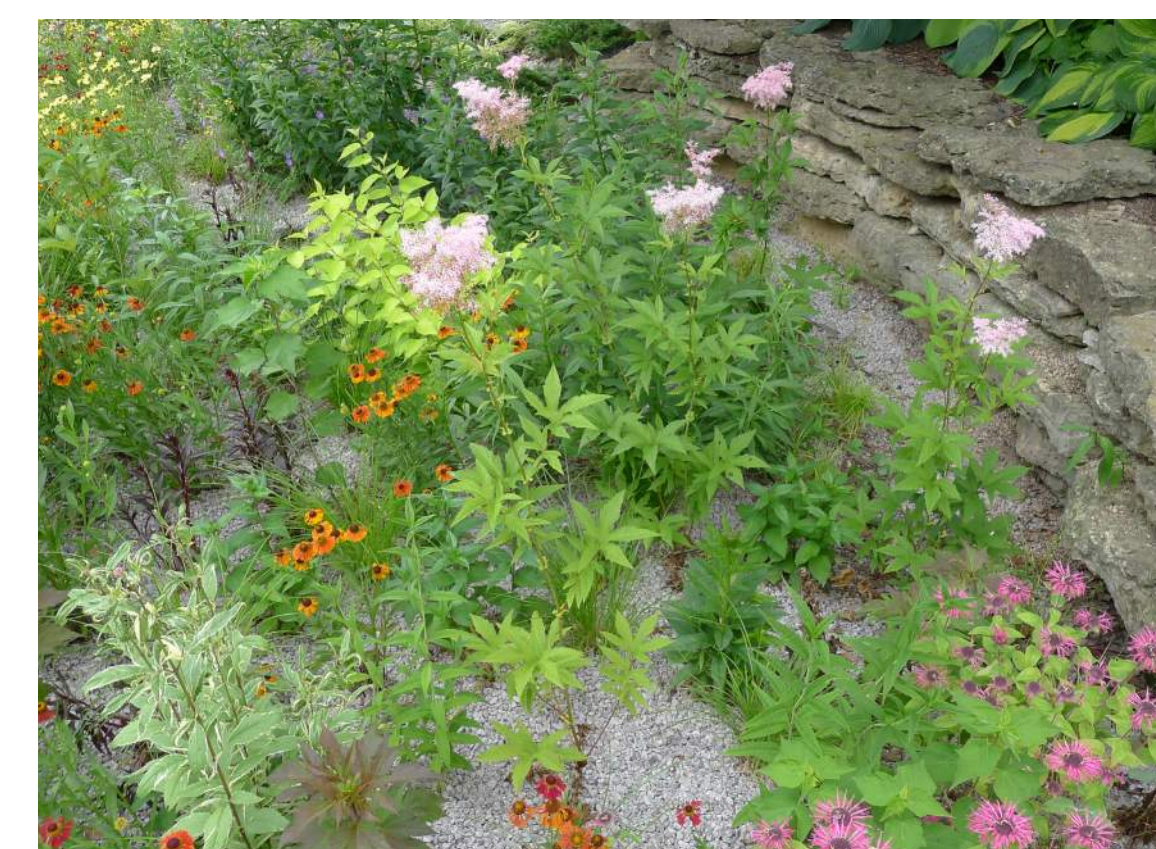
1. THE ABOVE ESTIMATE WAS PREPARED BY A REGISTERED PROFESSIONAL ENGINEER LICENSED TO PRACTICE IN THE STATE OF VIRGINIA AND IS A PROFESSIONAL OPINION OF CONSTRUCTION COSTS.
2. THE OPINION OF PROBABLE CONSTRUCTION COSTS PROVIDED HEREIN ARE MADE ON THE BASIS OF EXPERIENCE AND REPRESENT OUR BEST JUDGEMENT AS CIVIL ENGINEERS FAMILIAR WITH THE CONSTRUCTION INDUSTRY. THE FIRM CANNOT AND DOES NOT GUARANTEE THAT PROPOSALS, BIDS, OR THE CONSTRUCTION COST WILL NOT VARY FROM OUR OPINIONS OF PROBABLE COSTS. IF THE OWNER WISHES GREATER ASSURANCES AS TO THE CONSTRUCTION COST, WE RECOMMEND THE EMPLOYMENT OF AN INDEPENDENT COST ESTIMATOR.
3. CONCEPTUAL DESIGN WAS NOT FINALIZED OR APPROVED AT THE TIME THIS ESTIMATE WAS PREPARED, ACTUAL ITEMS AND QUANTITIES WILL VARY BASED ON FINAL DESIGN



Grass Filter Strip
As stormwater moves through grass, it slows down and sediment is filtered out. Putting swaths of Pennsylvania Sedge - a shade tolerant and vigorously growing ornamental grass - throughout this site would quickly stabilize the soil, absorb runoff and sediment, and create a peaceful river of flowing grass fronds. By mowing this a few times a year, a shorter grass can be achieved that is less likely to harbor small mammals.



Shade Perennials
Planting hardy shade perennials along the slopes is by far the best long term solution for preventing erosion and tree root exposure. Plants can be selected for their ability to spread quickly and have fibrous root systems that hold soil in place. Additionally, it has good aesthetic benefits.



Rain Garden
Turning the existing drain into a rain garden will solve the problem of sediment building up around and clogging the drain. Surrounding the drain, at a lower elevation, will be a rain garden basin that collects rainwater and allows it to be taken up by plants or filtered into the groundwater, allowing sediments time to settle out. In this plan, the drain stops being the main conveyance of water and instead becomes simply an overflow once the rain garden is unable to hold all the water in a storm event.



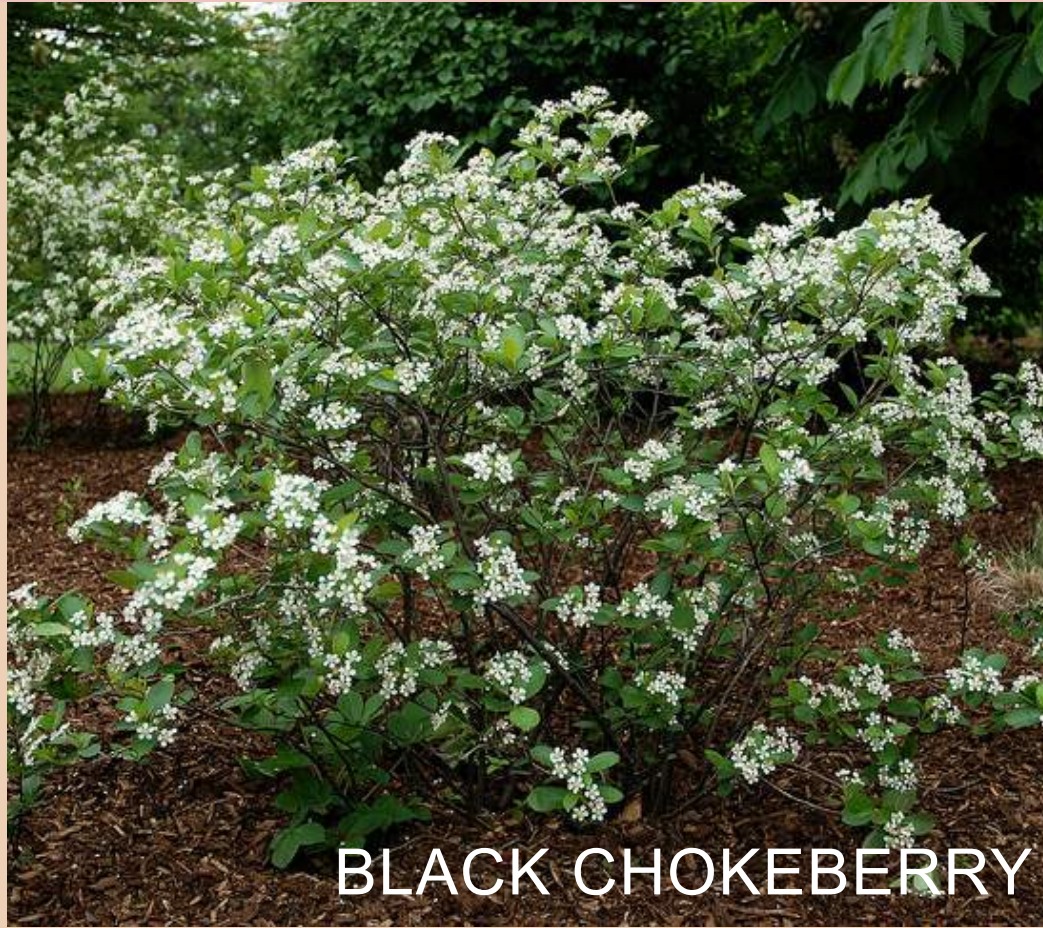
SHRUBS

GROUNDCOVERS

DRY OR
INTERMITTENT
MOISTURE



OAKLEAF HYDRANGEA



BLACK CHOKEBERRY



TIARELLA



HEUCHERA



ALLEGHANEY SPURGE



RED OSIER DOGWOOD



RED OSIER DOGWOOD



PENNSYLVANIA SEDGE



WHITE TURTLEHEAD



DWARF CRESTED IRIS

INTERMITTENT
TO HIGH
MOISTURE



SPICEBUSH



VIRGINIA SWEETPIRE



INLAND SEA OATS



CINNAMON FERN



BLUE MISTFLOWER



9900 MAIN ST STE 400, FAIRFAX, VA 22031
(703)-273-6820

12/13/2021

PARKFAIRFAX 725 LANDSCAPE PRELIMINARY BUDGET

(FIGURES BASED ON CONCEPT 'C' AND ADDITIONAL REQUEST FROM H.O.A. ON 12/6/21)

HARDSCAPE									
DECOMPOSED GRAVEL PATH									
	850 SF	@	\$	4	-	\$	6 /SF	=	\$ \$3,400.00 - \$ \$5,100.00
METAL EDGING									
	300 LF	@	\$	2.5	-	\$	4 /LF	=	\$ \$750.00 - \$ \$1,200.00
DRAIN MODIFICATION									
	1 EA	@	\$	1,000	-	\$	1,500 /EA	=	\$ \$1,000.00 - \$ \$1,500.00
OPTIONAL STONE STEPS (IF USED IN FINAL CONCEPT)									
	60 LF	@	\$	75	-	\$	100 /LF	=	\$ \$4,500.00 - \$ \$6,000.00
LANDSCAPE									
SOD									
	2,000 SF	@	\$	1.5	-	\$	2.5 /SF	=	\$ \$3,000.00 - \$ \$5,000.00
SHRUBS, GRASSES, GROUNDCOVERS									
	4,200 SF	@	\$	6	-	\$	9 /SF	=	\$ \$25,200.00 - \$ \$37,800.00
MULCH									
	45 CU YD	@	\$	50	-	\$	60 /CU YD	=	\$ \$2,250.00 - \$ \$2,700.00
EARTHWORK/GRADING									
	1 EA	@	\$	8,000	-	\$	10,000 /EA	=	\$ \$8,000.00 - \$ \$10,000.00
							TOTAL COST = \$		
							\$37,850.00 - \$ \$56,600.00		
							TOTAL COST WITH 5% CONTINGENCY = \$		
							\$39,742.50 - \$ \$59,430.00		

THIS ESTIMATE IS PROVIDED FOR INFORMATIONAL PURPOSES ONLY; IT IS NOT BASED ON ACTUAL PRICES OF MATERIAL OR LABOR COSTS AT TIME OF INSTALLATION, WHICH CAN FLUCTUATE. THIS ESTIMATE DOES NOT INCLUDE COSTS OF REMOVALS, RELOCATIONS, OR CRANE FEES, THAT MAY BE REQUIRED.

NOTES:

1. THE ABOVE ESTIMATE WAS PREPARED BY A REGISTERED LANDSCAPE ARCHITECT LICENSED TO PRACTICE IN THE STATE OF VIRGINIA AND IS A PROFESSIONAL OPINION OF CONSTRUCTION COSTS.
2. THE OPINION OF PROBABLE CONSTRUCTION COSTS PROVIDED HEREIN ARE MADE ON THE BASIS OF EXPERIENCE AND REPRESENT OUR BEST JUDGEMENT AS LANDSCAPE ARCHITECTS FAMILIAR WITH THE CONSTRUCTION INDUSTRY. THE FIRM CANNOT AND DOES NOT GUARANTEE THAT PROPOSALS, BIDS, OR THE CONSTRUCTION COST WILL NOT VARY FROM OUR OPINIONS OF PROBABLE COSTS. IF THE OWNER WISHES GREATER ASSURANCES AS TO THE CONSTRUCTION COST, WE RECOMMEND THE EMPLOYMENT OF AN INDEPENDENT COST ESTIMATOR.
3. CONCEPTUAL DESIGN WAS NOT FINALIZED OR APPROVED AT THE TIME THIS ESTIMATE WAS PREPARED, ACTUAL ITEMS AND QUANTITIES WILL VARY BASED ON FINAL DESIGN