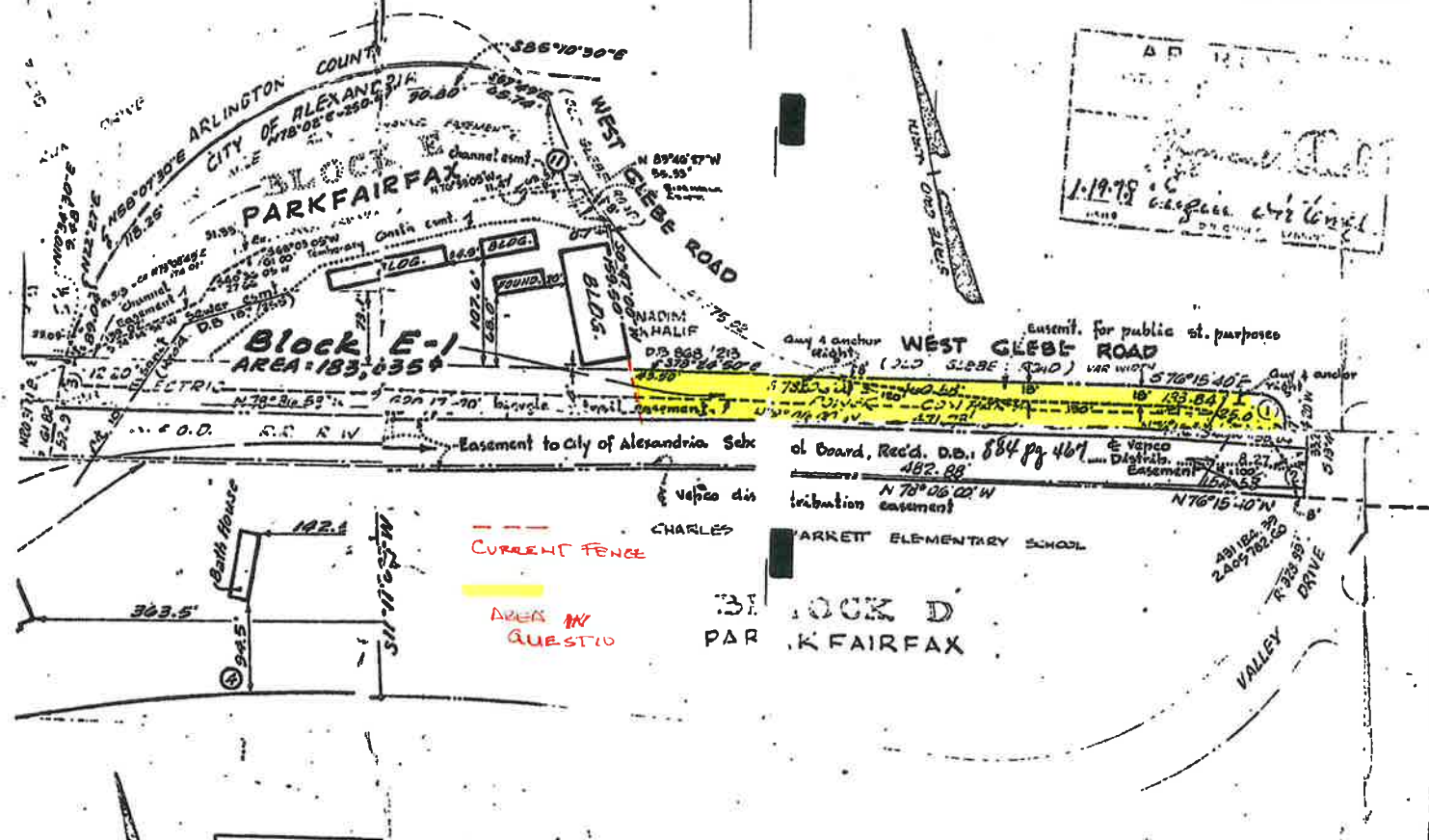


Discussion Item

Easement for Liberty Gas Station Land



Curve Table

No.	Radius	Del.	Arc	Tan.	Ch. Bearing	Chord
1	25.00	20.00	39.27	24.00	S 91° 12' 00" E	38.32
2	25.00	17.17	41.85	20.00	S 77° 23' 03" W	41.85
3	25.00	14.33	44.43	16.00	N 73° 30' 00" E	44.43
4	25.00	11.49	47.01	12.00	N 59° 36' 00" W	47.01
5	25.00	8.66	49.59	8.00	N 45° 42' 00" E	49.59
6	25.00	5.83	52.17	4.00	N 31° 48' 00" W	52.17
7	25.00	3.00	54.75	0.00	N 17° 54' 00" E	54.75
8	25.00	0.17	57.33	-4.00	N 04° 00' 00" W	57.33
9	25.00	-2.67	59.91	-8.00	N 09° 54' 00" E	59.91
10	25.00	-5.33	62.49	-12.00	N 25° 54' 00" W	62.49
11	25.00	-8.00	65.07	-16.00	N 41° 54' 00" E	65.07
12	25.00	-10.67	67.65	-20.00	N 57° 54' 00" W	67.65
13	25.00	-13.33	70.23	-24.00	N 73° 54' 00" E	70.23
14	25.00	-16.00	72.81	-28.00	N 89° 54' 00" W	72.81
15	25.00	-18.67	75.39	-32.00	N 05° 54' 00" E	75.39
16	25.00	-21.33	77.97	-36.00	N 21° 54' 00" W	77.97
17	25.00	-24.00	80.55	-40.00	N 37° 54' 00" E	80.55

NOTE:

Street frontage on Martha Custis Drive, Blocks 4-A and C-1 subject to 5 foot Virginia-American Water Company easement. Said easement lies adjacent to and parallel with street line.

NOTE: FOR EASEMENTS THAT AFFECT BLOCK 4, BLOCK "C" & BLOCK "E" - SEE ORIGINAL PLAT OF CONDOMINIUM: i.e. "PARKFAIRFAX" AND "PARC EAST".

THIS PLAT IS COMPILED FROM LAND RECORD INFORMATION AND INFORMATION SUPPLIED BY DEPARTMENT OF TRANSPORTATION, CITY OF ALEXANDRIA AND SURVEYS DIVISION, DEPARTMENT OF PUBLIC SERVICE, ARLINGTON COUNTY, VIRGINIA.